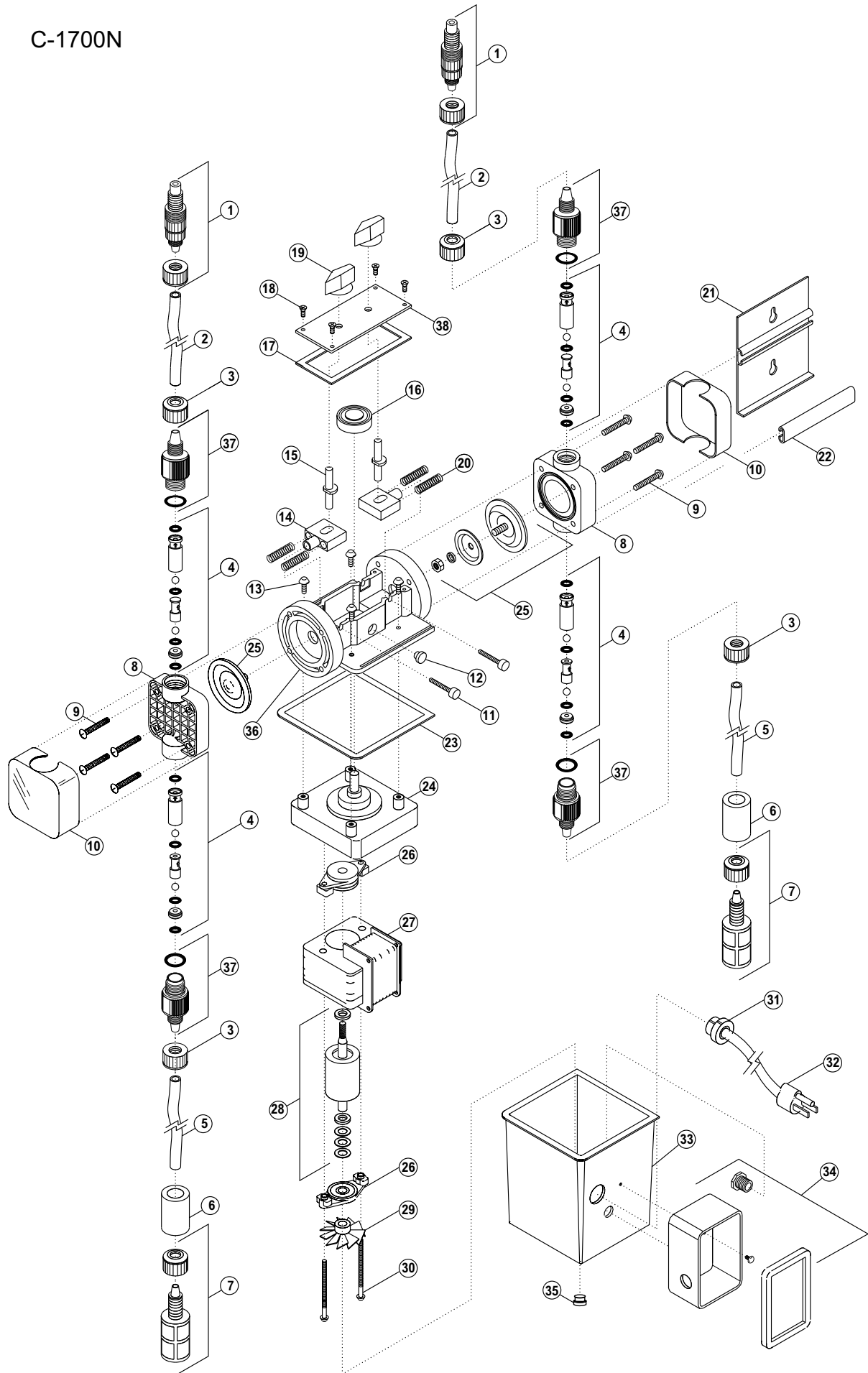


C-1700N



C-1700N Parts List

	Catalog No.	Description	Amount Req'd.
1.	A-014HD-6V	Injection / anti-syphon valve ½ PSI, Viton®	2
	A-014HD-6E	Injection / anti-syphon valve ½ PSI, EP	2
2.	C-335-6	Discharge Tubing 3/8 OD, 5ft. Opaque Poly-E	2
3.	90002-047	Tube nut	4
4.	K-568V-4	Bullet valve (double ball), Viton®, 4 pack set	4
	K-568V-10	Bullet valve (double ball), Viton®, 10 pack set	4
	K-569E-4	Bullet valve (double ball), EP, 4 pack set (optional)	4
	K-569E-10	Bullet valve (double ball), EP, 10 pack set (optional)	4
5.	70000-638	Suction tubing 3/8 OD, 5ft. Clear PVC w/indicator	2
6.	90008-068	Ceramic weight	2
7.	C-340N-6V	Foot valve / strainer Poly-Pro, Viton®	2
	C-340N-6E	Foot valve / strainer Poly-Pro, EP	2
8.	C-535FC	Heavy duty molded pump head	2
9.	90011-141	Screw, HD Pump head 10-32 X 1.25	8
10.	90002-147	Pump head cover	2
11.	C-1519N	Screw w/ cam lock 6-32 X 1.125	2
12.	90008-138	Hole plug .312, black	1
13.	C-624N	Screw 10-32 X .50 Phil pan, black	4
14.	C-1513N-1	Stirrup w/slide bearings C-1700N	2
15.	C-1505N	Adjustment cam .125 stroke #1	2
	R-1505N	Adjustment cam .055 stroke #2	2
	C-1505N-3	Adjustment cam .187 stroke #3	2
	C-1505N-4	Adjustment cam .100 stroke #4	2
16.	C-1507A	Drive cam assembly .125 stroke #1	1
	R-1507-A	Drive cam assembly .055 stroke #2	1
	C-1507-3A	Drive cam assembly .187 stroke #3	1
	C-1507-4A	Drive cam assembly .100 stroke #4	1
17.	90006-547	Gasket set 1700N	1
18.	C-1525N	Screw, 6-32 X .37 Phil oval, black	4
19.	C-1502	Knob stroke adjustment	2
20.	90006-022	Spring, stirrup return C-1700N	4
21.	76000-941	17N Mounting Bracket	1
22.	76000-953	Clamp, cover assembly	1
23.	90006-547	Gasket set C-1700N	1
24.	C-618P-14	Gearbox S/A, 14 RPM	1
	C-618P-30	Gearbox S/A, 30 RPM	1
	C-618P-45	Gearbox S/A, 45 RPM	1
	C-618P-60	Gearbox S/A, 60 RPM	1
	C-618P-125	Gearbox S/A, 125 RPM	1
25.	C-406T-17N	Diaphragm s/a PTFE coated EP	1
	C-406VT-17N	Diaphragm s/a PTFE coated Viton	1
26.	C-612PB	Bearing bracket with bearing	2
27.	C-615P-1	Stator s/a 115V / 60Hz, blue-black Lead wires	1
	C-615P-2	Stator s/a 230V / 60Hz, red-black Lead wires	1
	C-615P-3	Stator s/a 220V / 50Hz, brown-blue Lead wires	1
	C-615P-4	Stator s/a 24V / 60Hz, blue-white Lead wires	1
	C-615P-6	Stator s/a 230V / 60Hz, red-yellow	1
	C-615P-8	Stator s/a 220V / 50Hz, brown-yellow Lead wires	1
	C-615P-9	Stator s/a 115V / 60Hz, blue-yellow	1
28.	C-616PN	Rotor s/a with shaft and spacers	1
29.	C-612F-1	Fan	1
30.	C-625	Screw 8-32 X 2.50 Phil round	2
31.	A-033N	Cord stain relief (Power Cord Models)	1
32.	90010-110	Power cord SJTW/A (115V models)	1
33.	C-1708PN	Motor Cover only (115V model w/cord)	1
	C-1708PN-2	Motor Cover only (junction box models)	1
34.	C-308JN	Junction box w/cover (230V and 24V models)	1
35.	C-1517	Bumper Feet	4
36.	76000-937	Motor Mount C-1700N	1
37.	C-560-6E	Adapter, 3/8" OD Tube w/ EP, O-ring	4
	C-560-6V	Adapter, 3/8" OD Tube w/ Viton® O-ring	4
38.	76000-938	Cover top, C-1700N machined	1